



**World Leader in
Small-Footprint DDS
Applications**

CoreDX DDS Spy™

Clear Visibility into your Complex DDS Networks

BENEFITS

- **Reduces development and integration costs**
- **Supports complex network configurations**
- **Real time insight into DDS deployments**
- **Test verification tool for DDS communications**

The **CoreDX Spy** software is a graphical DDS Tool that discovers and monitors all DDS entities on a network. CoreDX Spy gathers information about Domains, DomainParticipants, Topics, DataReaders, and DataWriters. It provides, at a glance, insight into common DDS configuration errors. Without a development tool like CoreDX Spy, these small problems can take days or weeks to diagnose.

The power of the CoreDX DDS Multiplexor comes from its ability to process raw IP data packets to find, process, and graphically represent DDS entities and their relationships. CoreDX Spy allows you to quickly locate QoS incompatibilities, Topic and data type mismatches and other configuration problems, maximizing the productivity of your development team.

Because it is based on the Open-Standard *Real-Time Publish Subscribe (RTPS)* protocol, the CoreDX Spy can be used to analyze DDS data from any RTPS compliant DDS implementation. This is particularly valuable for mixed DDS deployments.

Use Cases

The CoreDX Spy software provides a valuable tool for DDS development. Increase the productivity of your DDS application developments by using CoreDX Spy to quickly track down common configuration errors.

CoreDX Spy is a valuable test and verification tool. CoreDX Spy can monitor DDS networks during integration and test, helping testers to verify data communications between applications.

Use CoreDX Spy again during installation and verification of deployments to verify system configurations, network connectivity and data communications.

Built on the Leading Small Footprint CoreDX DDS middleware, the CoreDX Spy offers all these features and is still easy on system resources.

Get started by visiting our website and downloading the 30-day Full Featured CoreDX DDS™ Evaluation software. Start here: [Download 30-Day evaluation](#)

CoreDX Spy Features

CoreDX Spy displays all currently alive DomainParticipants and their DataReaders and DataWriters, including information about their Topics, QoS settings, and data types. CoreDX Spy also maintains this information after the DDS entities are deleted from the network, allowing post processing analysis of data communications.

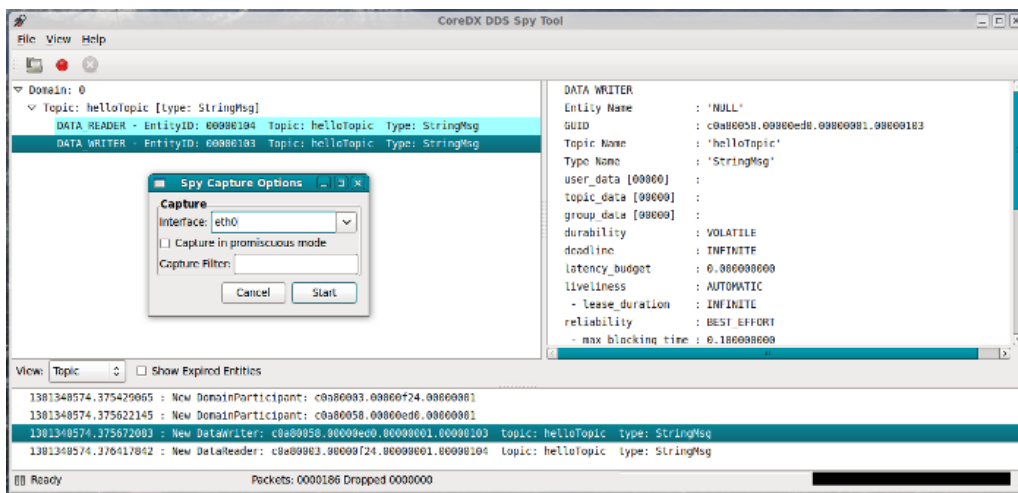
CoreDX Spy displays a packet trace of all DDS data on the network, including source and destination ad-

resses. This packet trace can be filtered to help find information from specific DDS entities. It also allows you to drill down into the DDS data packet to see field by field discovery information and application data.

The CoreDX Spy software can monitor DDS network traffic in real time, providing a live look at DDS networks. In addition, it can process data from industry standard network capture files (e.g. Wireshark), becoming a valuable analysis tool for previously

captured DDS communications.

The CoreDX Spy includes *CoreDX DDS Dynamic Type* technology. The Dynamic Type technology enables discovery of data type information at runtime, and allows CoreDX Spy to dynamically inspect data values and detect mismatches between DDS entities.



CoreDX Spy Specifications

Operating Systems:

- Linux 2.6
- Solaris
- Windows

Hardware Platforms:

- X86, 32bit & 64bit
- UltraSPARC

Modes:

- Command line
- GUI

Customizations for additional platforms are possible, contact us for information.

About Twin Oaks Computing

Twin Oaks Computing, Inc. provides state-of-the-art engineering in support of high-performance communications, including device drivers, communication protocols, inter-process communications, network services, and secure environments. Our unique company culture allows us to be agile and provide superior responsiveness to our customers, and our extensive domain experience is essential to our customers' ability to perform their missions. We are committed to being a premier source of quality high-performance communications technologies for use in DoD and commercial applications.

Twin Oaks Computing, Inc

755 Maleta Ln Ste 203
Castle Rock, CO 80108
Phone: 720-733-7906

www.twinoakscomputing.com
contact@twinoakscomputing.com